

SAXDOR

YACHTS

The new era of boating



XTREME
MACHINES

SAXDOR | 200

“There are other ways in which the Saxdor 200 Sport set in motion, with various wow factors, intensified within the design. Choose the right colour and seat options for your comfort.

The multi-awards winning Saxdor 200 pioneered the new driving experience of all time”



The new era for sport boats

They say that if something looks too good to be true then it usually is but the Saxdor 200 Sport is the exception to that rule. It doesn't seem possible that a boat with this much style, usability and performance could cost just S\$49,060 with a 100hp outboard engine but that is exactly what Saxdor has achieved with this model. Crucially, it doesn't appear built to a price in any way shape or form and uses top class materials and components to ensure it feels a cut above its 25ft competition. can be configured as a sociable dinette, a huge sunpad or three separate rows of forward facing seats.

Launched in March 2020, the 200 Sport was met with rave reviews from the press and picked up awards at Best of Boats 2020, the European Powerboat of the Year Awards and Motor Boat & Yachting's very own Motor Boat Awards. It's easy to see why, given the boat's outstanding ride and handling for one of such diminutive proportions and the flexibility of its deck layout to suit individual customers' needs.



The pocket rocket

On the water, the twin-stepped performance hull is the star of the show and punches well above its weight in the face of challenging sea conditions. The soft-riding and exceptionally grippy hull is matched to a selection of single outboard engines, from the entry-level 100hp that will give a top speed of 34 knots, to the 175hp version, which has a comfortable top speed of 45 knots. The 3.4-litre V6 Mercury, which is the top of the range, delivers storming performance and, thanks to a fly-by-wire throttle, superb control both at speed and when manoeuvring the boat around a marina or on to a trailer.

The 200 Sport is well suited to trailer boating; with a weight of around 1,000kg including the outboard, fuel and cruising stores, it can be towed behind an ordinary family car instead of a large SUV that some of its heavier rivals require. The 200's lightness and self-draining deck also make it the perfect tool for watersports and for use as a fast and versatile superyacht tender, ideally suited to island hopping and accessing hard-to-reach destinations. In addition to plentiful built in deck storage, the boat can be specified with board racks and rod holders to create the ultimate fast water toy.







The sleek design of a boat and a jet ski

Charm, modernity, power, design and sportiness. This is Saxdor 200 and you couldn't ask for more. The Saxdor 200 was designed with "serious fun" in mind. It is a superior example of the non-traditional thinking and the innovative power that is the spirit of Saxdor Yachts. This remarkable personal watercraft combines our trademark qualities of sexy design, effortless steering, first-class technology and peerless comfort in a jaw-dropper package. The twin-stepped hull design comes into play immediately, with the 100hp pushing out some decent performance figures. The console is stylishly shaped to match the surrounds and has a nice wide dash panel to

suit twin 9in units and gauges. The wraparound windscreen is smartly designed for high-speed open water conditions, and the sunshades for and aft provide additional shelter as needed while at rest. An extended sunpad rests on the foredeck and the dinette converts into a sunbathing space via flip-up backrests. The bow also holds an integrated anchor and windlass to maximize the available space up front. Saxdor 200 offers 3 different seats layout of triple jockey seat, side by side four seater and soon a new limousine style seating.





SAXDOR 200



Saxdor 200 Sport is the WINNER of the European Powerboat of the Year 2021 in the category Up to 8 m. The general criterias are workmanship, safety, driving behavior, design, distribution of space, and price-performance ratio.

The international jury of the Best of Boats Awards has decided upon the very best motorboats of the model year 2020:

Saxdor 200 Sport is the WINNER in the category of Best of beginners 2020.

Saxdor 200 Sport is the FINALIST of the Motorboat Awards 2021 in the category of Sportboats.

Saxdor 200 Sport was awarded a special nomination "HIGHLY COMMENDED"



"Modern and fun with sheer power, genuine stability and maximum portability make the iconic Saxdor 200 ideal for all-day fun-filled excursion, and easily navigating a busy harbour"

-Saxdor 200 in Venice 2021



The Saxdor 200 is an ideal boat for charter and for first-time boat owners. At the right price point with its usability and driver friendliness, the boat makes a good fit for charter platform and for beginners.

The usual matchless acceleration and excellent mobility of the Saxdor 200 are assured. A boater can adapt the design to any variant on an open, hardtop, T-top, or Targa.



Saxdor 200 Design Sport is delivered with a versatile package and multi-functional fun boat. Try wakeboarding or water skiing, or treat yourself or your guests to a quayside restaurant in a jiffy – the watercraft can carry four passengers with the side-by-side seat layout



SAXDOR | 200

Specifications

Overall Length (excl. Engine) 5,94 m (19 ft 6 in)

Beam 2,29 m (7 ft 6 in)

Height (Waterline to T-Top) 1,925 m (6 ft 4 in)

Height (Waterline to Console cage) 1,816 m (5 ft 11 in)

Draft to props 0,72 m (2 ft 4 in)

Weight (light craft excl. Engine) 780 kg (1720 lbs)

Passengers Bench Seat 4, Scooter Seat 3

Fuel Capacity 110 liters (29 gal)

Construction GRP

Classification: ISO Cat. C, ABYC

Outboard engines 100 – 175 Hp

Fuel consumption cruise 175 hp 0.78 l/nm @30kts

Hull Design Twin stepped 22.5 degree sport hull

Maximum draught 0,72m (2,36 ft)

*Optional packages



Starting price with Mercury 100hp XL CT engine is S\$49,060*.

*excl. GST and other applicable taxes and costs such as handling, freight and delivery.

Technical information & Equipments

- STANDARD**
 - Large front deck hatch with gas springs and security holder
 - Jockey seat for 3 persons with backrests and lock
 - Rails, handles and cleats
 - Hydraulic steering
 - Standard steering wheel
 - Navigation lights
 - Bilge pumps (2 pcs)
 - Fixed fuel tank with sensor
 - Fire extinguisher storage with fire port
 - Soft deck on the lower deck
 - Front deck cup holders (2 pcs)
 - Hull stickers
 - Adjustable windshield
 - Cup holders in console (2 pcs)
 - 12 V outlet in console
 - Storage bag below the steering wheel
 - Mercury Vessel View Mobile
 - Horn
- ENTERTAINMENT**
 - Basic Fusion Entertainment Set

- Advanced Entertainment Set (av. Only with T-top roof option)**TECHNOLOGY**
 - Simrad GO9 XSE (incl. Mercury Vessel View Link)
 - Twin Simrad GO9 XSE (incl. Mercury Vessel View Link)
 - Aft sonar
 - Mercury Threat Deterrent System (TDS)
 - Trim tabs**COMFORT**
 - Soft deck on the large compartment hatch
 - Side-by-side jockey seating and bench for 4 persons
 - Front deck cushion
 - Anti-slip material in big storage box
 - Water tight storage box in console with wireless Qi charger and USB
 - Water ski pole
 - Sleeping CamperStyle Tent with

- window on front deck, 12V outlet and lighting
 - Cooler 36 L (av. Only with jockey seat)
 - Sunshade roof on fore deck
 - Bimini Top (av. only without T-top roof option)
 - Deck Lights
 - Side windows on deck
 - Soft deck on side steps
 - Mooring package
 - Harbour covers**SELECTIONS**
 - Side-by-side jockey seating and sofa
 - Targa arch
 - Targa arch with T-Top
 - Targa arch with soft top

And optional packages (view price list or visit www.saxdor.com)

ENGINES



Mercury 100
hp CT

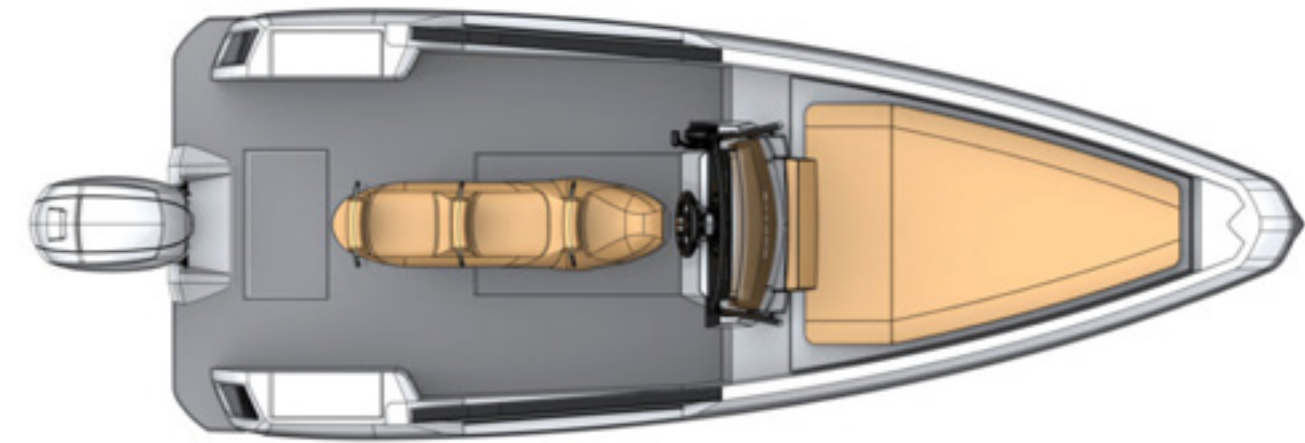
Mercury 115
hp Pro XS

Mercury 150
hp Pro XS

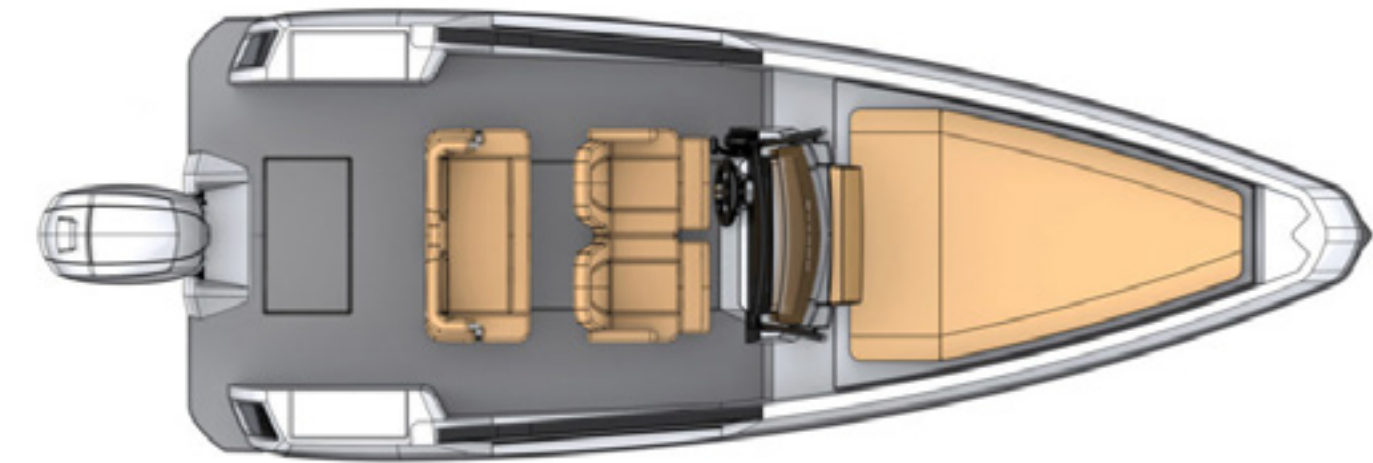
Mercury 175
hp V6 Pro XS

Mercury 175
hp V6 DTS

Layouts



Triple jockey seat layout.



Side-by-side four seater layout

Design selections

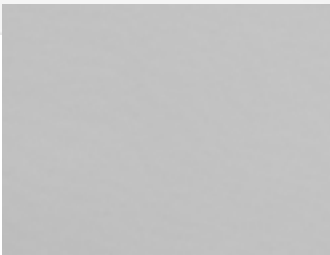
Basic Red Design , hard top, triple jockey seat (different seat layout and roofs available)



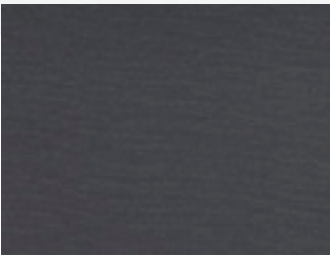
Seats and upholstery



Silververtex Grenadine



Silververtex Aluminium



Silververtex Titanium

Design selections

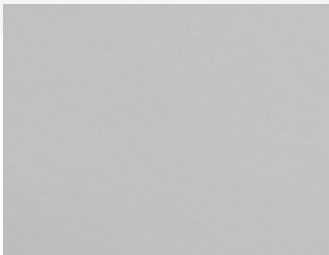
Pro Sport Design Red , open, triple jockey seat (different seat layout and roofs available)



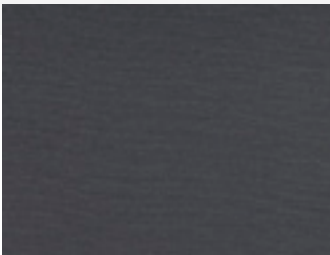
Seats and upholstery



Silververtex Grenadine



Silververtex Aluminium

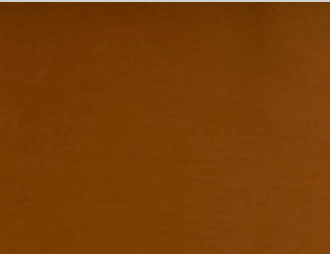


Silververtex Titanium

Blue Cobre Design , soft top, four-seater (different roofs available)



Seats and upholstery



Silververtex Cobre

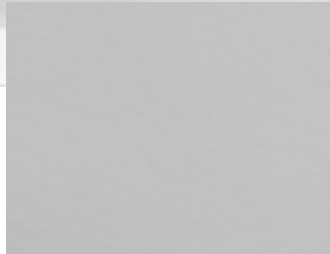
Pro Sport Turquoise Design, targa, four-seater (different seat and roofs available)



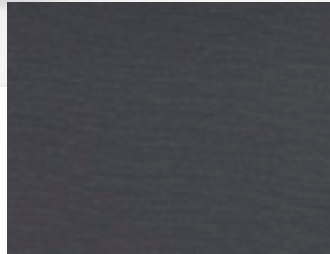
Seats and upholstery



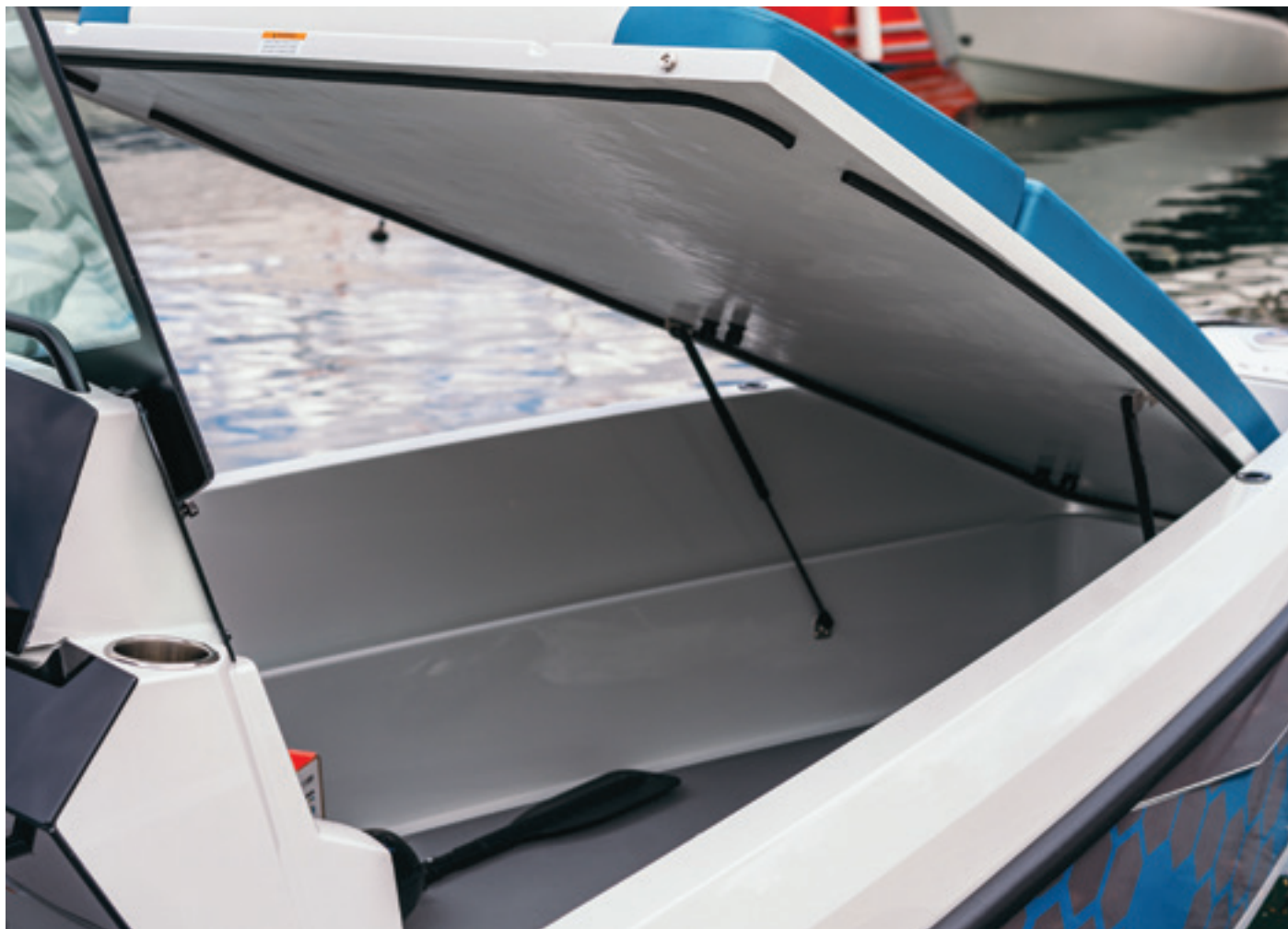
Silververtex Turquoise



Silververtex Aluminium



Silververtex Titanium



Scan the QR code to watch a video of the Saxdor 200
www.xtrememachines.com.sg









