

# GTX™ PRO 130

All new rental model.

## KEY FEATURES

- Heavy-duty parts: electrical harness, driveshaft, wear ring, rental seat, handlegrips
- Direct-access front storage
- iBR® (Intelligent Brake & Reverse) (optional)
- Watertight phone compartment
- Large swim platform with LinQ™ attachment system
- Boarding ladder



White & Reef Blue

/iTC/iBR/ST3/CLCS/ECO

## CAPACITY

Rider Capacity	3
Weight Capacity	600 lb/272 kg
Fuel Capacity	18.5 US gal/70 L
Glove Box	0.8 US gal/2.9 L
Front Bin	25.3 US gal/96 L
Storage Capacity - Total	26.1 US gal/98.9 L

## DIMENSIONS

Length (bumper to bumper)	135.9"/345.1 cm
Width	49.4"/125.5 cm
Height	44.8"/114 cm

## HULL

Type	ST3 Hull™
Material	Fiberglass

## OTHER FEATURES

- iControl®
- Seat strap
- RF D.E.S.S.™ key
- Wide-angle mirrors
- Handlegrip with palm rests
- Footwell carpets
- Tow hook

## ROTAX® ENGINE 1630 ACE™ - 130

Horsepower	130 hp
Intake System	Naturally aspirated
Displacement	1,630 cc
Cooling	Closed-Loop Cooling System (CLCS)
Reverse System	Electronic iBR** (optional)
Fuel Type	87 octane
Throttle System	iTC™ (Intelligent Throttle Control) system
Exhaust System	D-Sea-Bel™ system

## GAUGE

Type of Gauge	4.5" digital display	
Main Functions	• Speedometer	• Clock
	• RPM	• Vehicle hour display
iTC System - mode	• Sport mode	• ECO® mode

## WEIGHT

Dry Weight	790 lb/359 kg
------------	---------------

## WARRANTY

BRP limited warranty covers the watercraft for one year.

## FEATURE HIGHLIGHTS



### Heavy-duty components

Heavy-duty wear ring, driveshaft, wiring harness, seat and handlegrips designed to last longer.



### ECO® mode

This exclusive Sea-Doo® feature optimizes power output for up to 46% improved fuel efficiency.



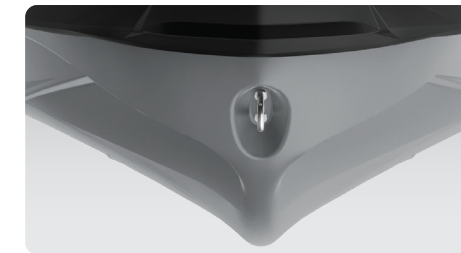
### iBR® (Intelligent Brake & Reverse) (optional)

Exclusive to Sea-Doo®, iBR® stops the watercraft sooner and provides more control and maneuverability at low speeds and in reverse.



### ROTAX® 1630 ACE™ - 130 engine

The powerful and reliable naturally aspirated 1630 ACE™- 130 is all about fun and acceleration while providing excellent fuel efficiency.¹



### ST3 Hull™

Stable and predictable for a versatile, safe and smooth ride in moderate and rough water conditions.



### Boarding ladder

Makes boarding from the water easier and quicker.

## TRAILER (OPTIONAL)

### Aluminum MOVE II



- Fully adjustable carpeted bunks (side-to-side/front-to-back) allow you to change bunk angles to fit all watercraft.
- Custom frame design requires less water to load and unload watercraft.
- Sealed maintenance-free wheel bearings for added peace of mind.

### Aluminum MOVE I Extended 1250



- All models are available with a galvanized frame for extended life in all weather conditions or in a painted black version, with or without marine jack.
- Move I Extended 1250 and Move II are also available in an aluminum frame that delivers better corrosion resistance to significantly extend life of trailer.

\*Electronic brake, neutral and reverse.

©2020 Bombardier Recreational Products Inc., (BRP). All rights reserved. TM, ® and the BRP logo are trademarks of Bombardier Recreational Products Inc. or its affiliates. Products are distributed in the USA by BRP US Inc. Because of our ongoing commitment to product quality and innovation, BRP reserves the right at anytime to discontinue or change specifications, price, design, features, models or equipment without incurring any obligation. Printed in Canada. ¹ Actual engine image may vary.